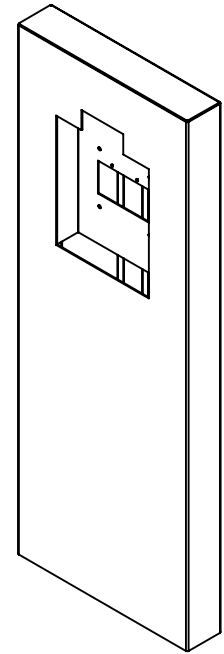
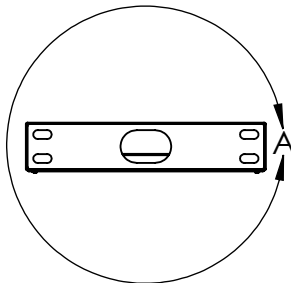
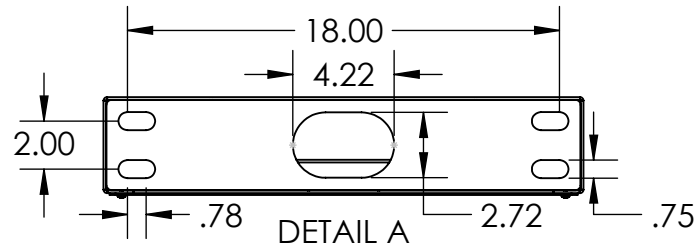


WINMATE R17IT3S-SPA1HB-T2  
 PANEL PC FLUSH CUTOUT & BRACKET



NOTES:  
 1. MATERIAL OF CONSTRUCTION IS 304 SS, BRUSHED #4.



PEDESTALPRO.COM  
 1-800-660-3072

UNLESS OTHERWISE SPECIFIED:

DIMENSIONS ARE IN INCHES  
 TOLERANCES:  
 FRACTIONAL  $\pm 1/32$   
 ANGULAR:  $\pm 2^\circ$   
 TWO PLACE DECIMAL  $\pm 0.010$   
 THREE PLACE DECIMAL  $\pm 0.005$

INTERPRET GEOMETRIC  
 TOLERANCING PER:  
 ASME Y14.5 -2009

NAME	DATE
DRAWN	
CHECKED	

**PROPRIETARY AND CONFIDENTIAL**  
 THE INFORMATION CONTAINED IN THIS  
 DRAWING IS THE SOLE PROPERTY OF  
 PEDESTALPRO LLC. ANY REPRODUCTION  
 IN PART OR AS A WHOLE WITHOUT THE  
 WRITTEN PERMISSION OF PEDESTALPRO LLC  
 IS PROHIBITED.

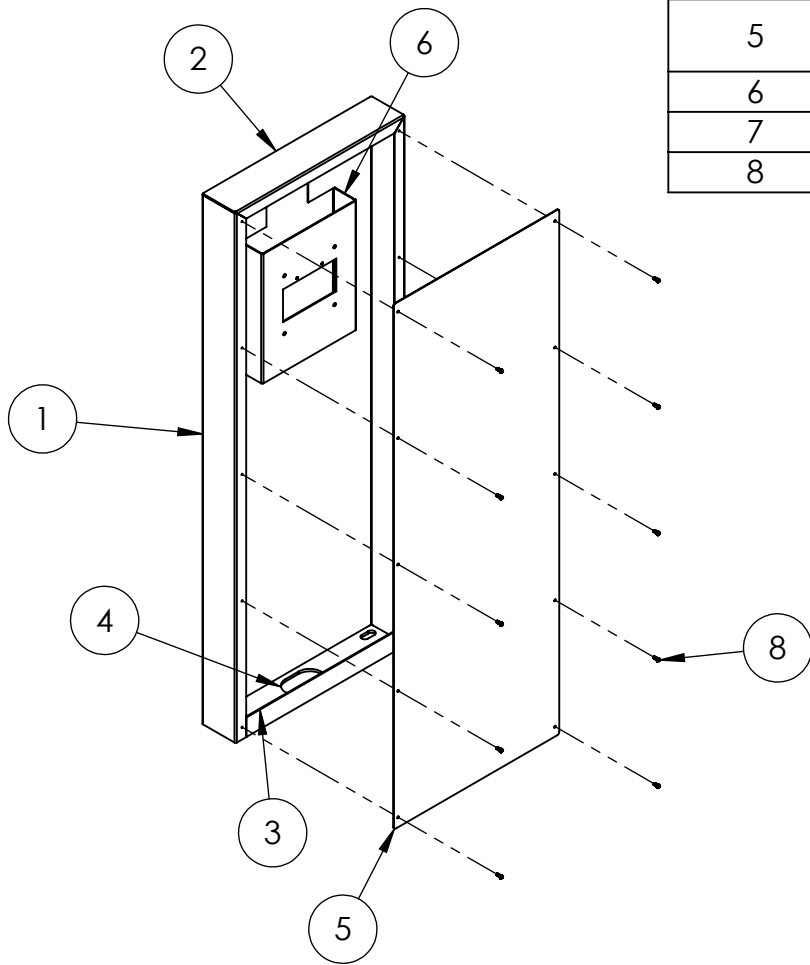
TITLE:  
**INSTALLATION**

Friday, January 10,  
 2025 10:46:23 AM

WEIGHT: 88.816

SIZE	PART NO.	REV
<b>A</b>	204CAB-WINM-01-304	<b>A</b>
NO SCALE		SHEET 1 OF 10

ITEM NO.	PART NUMBER	DESCRIPTION	QTY.
1	204CAB-WINM-01-304 MAIN BODY	MAIN BODY	1
2	204CAB-WINM-01-304 TOP	TOP	1
3	204CAB-WINM-01-304 BOTTOM CLOSURE	BOTTOM CLOSURE	1
4	204CAB-WINM-01-304 BASE PLATE	BASE PLATE	1
5	204CAB-WINM-01-304 ACCESS PANEL	ACCESS PANEL	1
6	PLABRA-WM-R17IT3S-SPA1HB-T2	BRACKET	1
7	STIFFENER	STIFFENER	1
8	--	8-32 X 1/2" PAN HEAD SCREW	10



NOTES:

1. SEE STANDARD PREPARATION AND COATING INSTRUCTIONS FOR COATING PROCEDURE AND COLOR.
2. SEE STANDARD PACKAGING INSTRUCTIONS FOR PACKAGING PROCEDURE.



PEDESTALPRO.COM  
1-800-660-3072

UNLESS OTHERWISE SPECIFIED:

DIMENSIONS ARE IN INCHES  
TOLERANCES:  
FRACTIONAL  $\pm 1/32$   
ANGULAR:  $\pm 2^\circ$   
TWO PLACE DECIMAL  $\pm 0.010$   
THREE PLACE DECIMAL  $\pm 0.005$

INTERPRET GEOMETRIC  
TOLERANCING PER:  
ASME Y14.5 -2009

NAME DATE

DRAWN

CHECKED

**PROPRIETARY AND CONFIDENTIAL**

THE INFORMATION CONTAINED IN THIS  
DRAWING IS THE SOLE PROPERTY OF  
PEDESTALPRO LLC. ANY REPRODUCTION  
IN PART OR AS A WHOLE WITHOUT THE  
WRITTEN PERMISSION OF PEDESTALPRO LLC  
IS PROHIBITED.

TITLE:

ASSEMBLY

Friday, January 10,  
2025 10:46:23 AM

WEIGHT: 88.816

SIZE  
**A**

PART NO.  
204CAB-WINM-01-304

REV  
**A**

NO SCALE

SHEET 2 OF 10