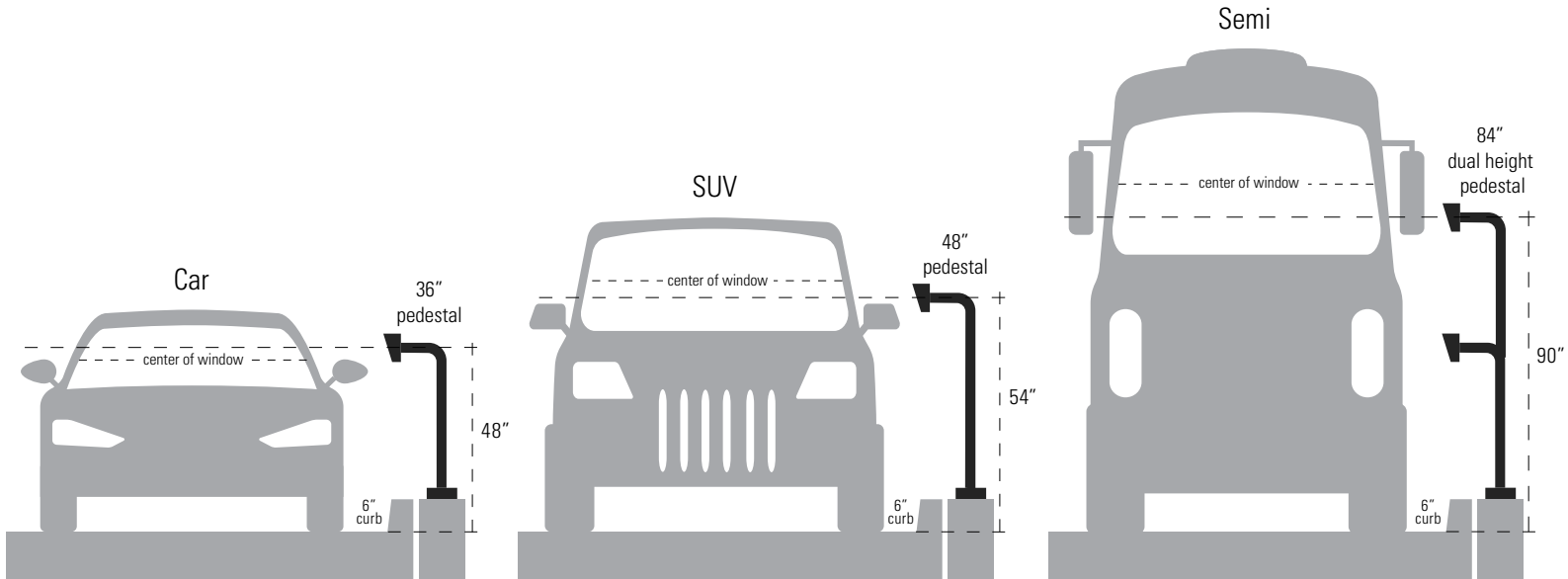





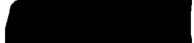



Vehicle Height Chart

Determine which pedestal size is best for your install location based on the average vehicle height (center of window) for your intended use.

Dual height pedestals are available to accommodate vehicles of varying heights.



	<u>make and model</u>	<u>bottom of window</u>	<u>center of window</u>	<u>top of window</u>
 Car	Pontiac Solstice	34"	39.5"	45"
	Honda Accord	38"	46.5"	53"
	Mercedes Benz S430	39"	47"	55"
 SUV	Acura MDX	46"	55.5"	65"
	Toyota Forerunner	48"	56.5"	65"
	Lexus GX470	49"	58.5"	68"
 Pickup	Chevy Suburban	51"	61"	71"
	Dodge Ram 1500	53"	62"	71"
	Ford F-150	54"	62.5"	71"
 RV	Small Size RV	57"	69.5"	82"
 Delivery	UPS or FedEx Trucks	67"	77.5"	88"
 Bus	School Bus	70"	84"	98"
	City Bus	70"	84"	98"
 Semi	Any Make/Model	92"	98"	104"

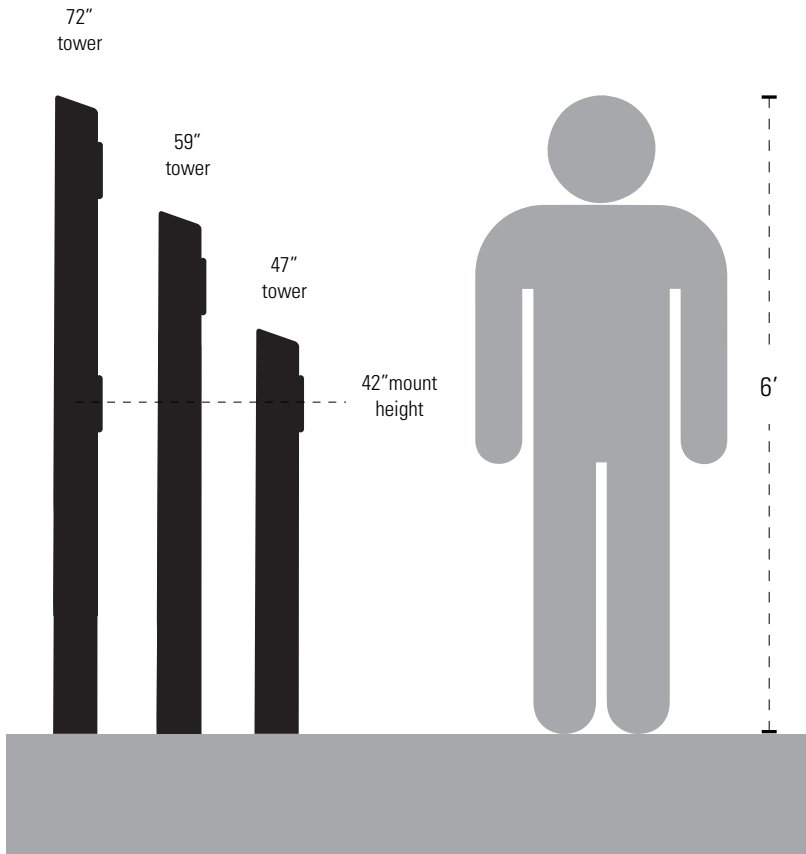


Architectural Towers Height Chart

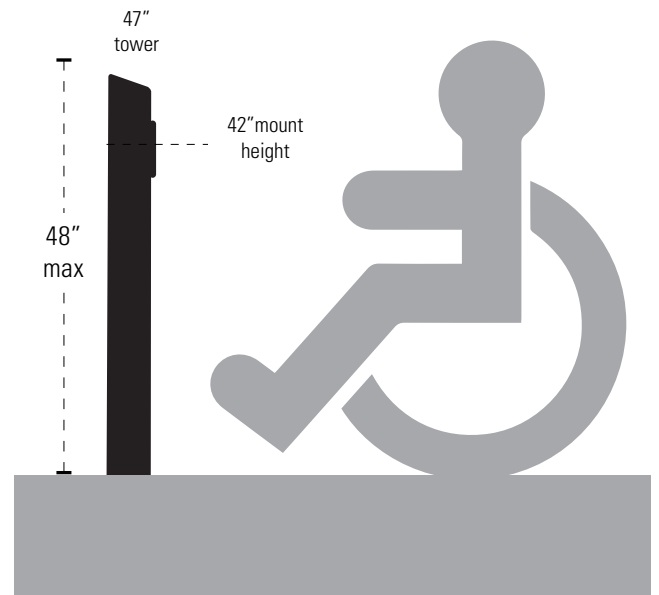
Determine which architectural tower/pedestal size is best for your install location requirements and device(s) you plan to use.

Most of our architectural towers include one single-gang cutout included on the front. Additional cutouts are available for a small fee.

Pedestrian Access



ADA Access



To meet ADA requirements the max mounting height of your lowest access control device cannot exceed 48 inches*

Additional info regarding ADA accessible design can be found on our website at <https://www.pedestalpro.com/ada-standards>

**This content is for quick view only and may not represent the most recent updates from the Department of Justice.*

For official documentation and requirements please visit https://www.ada.gov/regs2010/2010ADAStandards/2010ADAStandards_prt.pdf

